

# LIFT CAR FINISHES

**EXPRESS**  
ELEVATORS

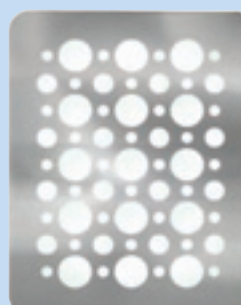
## CEILING



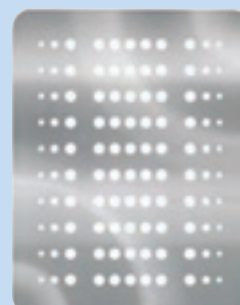
**05\***  
STAINLESS STEEL &  
PLEXIGLASS DEFUSER



**010\***  
LIGHT FITTING &  
PLEXIGLASS DEFUSER



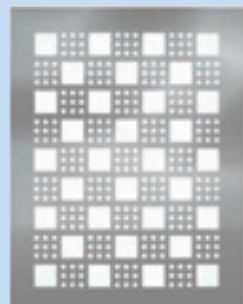
**011\***  
STAINLESS STEEL  
"BUBBLES"



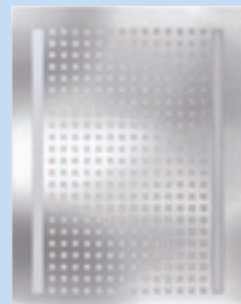
**012\***  
STAINLESS STEEL  
"CIRCLES"



**08**  
STAINLESS STEEL  
& MULTIPLE SPOT LIGHTS



**013\***  
STAINLESS STEEL  
"CHESS"



**014\***  
STAINLESS STEEL  
"SQUARE"



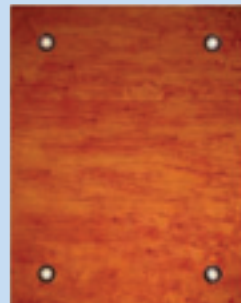
**013**  
TWO TYPES  
STAINLESS STEEL  
& 4 SPOT LIGHTS



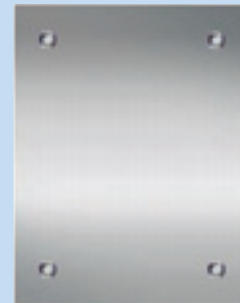
**02\***  
H.P. LAMINATE WITH  
PLEXIGLASS DEFUSER  
& 4 SPOT LIGHTS



**03\***  
STAINLESS STEEL WITH  
PLEXIGLASS DEFUSER  
& 4 SPOT LIGHTS



**09**  
H.P. LAMINATE  
& 4 SPOT LIGHTS



**07**  
STAINLESS STEEL  
& 4 SPOT LIGHTS

## FLOORS - CERAMIC TILES



TRITON



ATHENA



PRIAMUS



CRONUS



HECTOR



GRIGIO



CHAMPAGNE



SPARTACUS

## FLOORS - WOODEN



3124



3121



3127



3120



2221



3126



1085



STEEL



ALUMINIUM

(Stainless steel checker plate is also available)

## HEAVY DUTY RUBBER FLOORS TILES



BLACK



GREY



BROWN



BEIGE



ANTH

## FLOORS - LINOLEUM



6674



6603

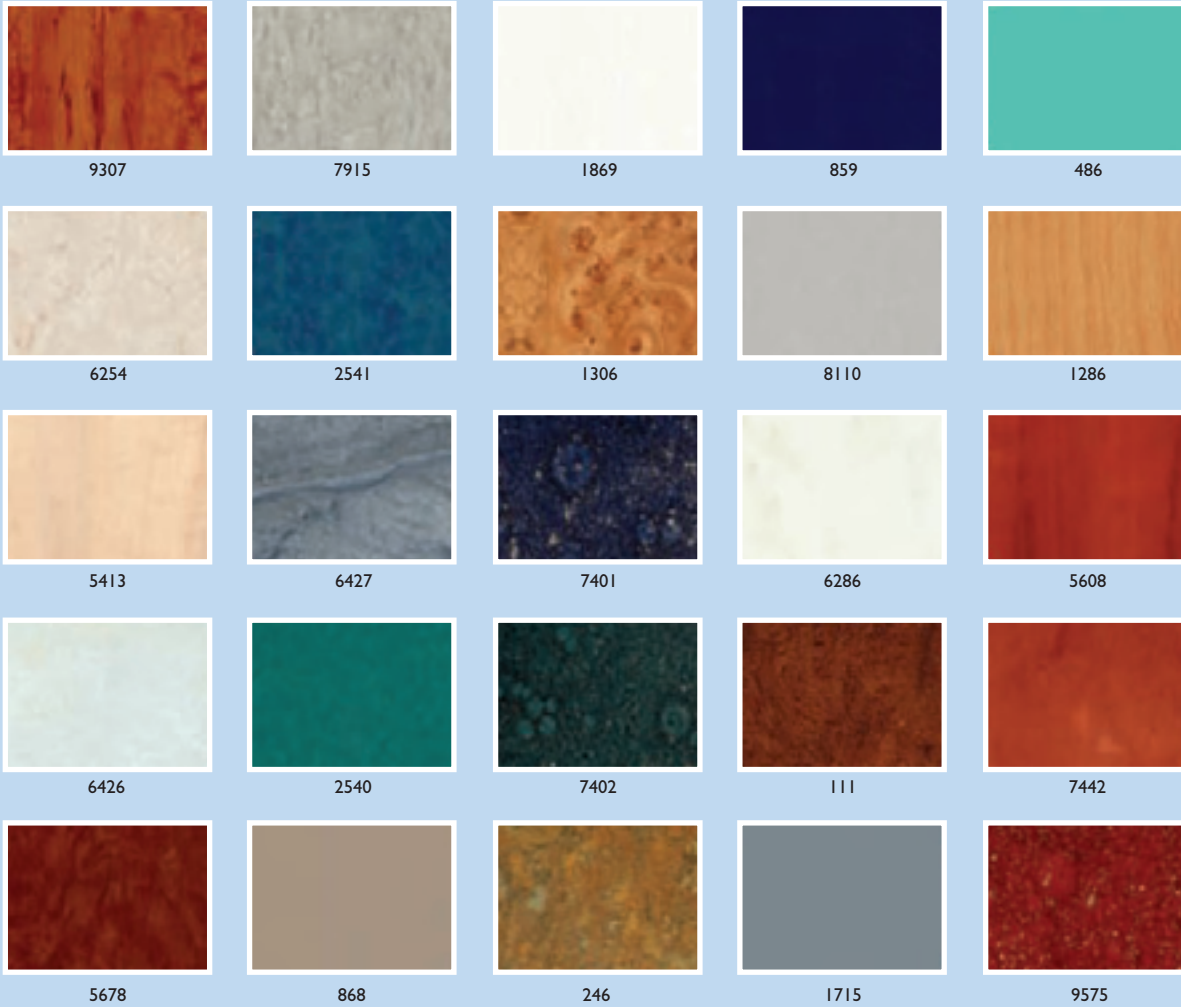


6602

# EXPRESS

## LIFT CAR FINISHES

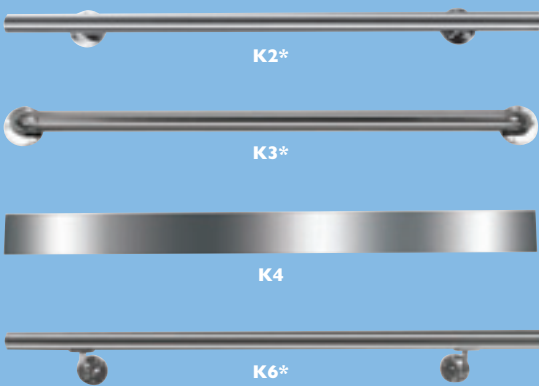
### WALL LAMINATES



### FIRE RATED



### HANDRAILS



\* Handrails meet the requirements of EN81-70

This publication is for general information purposes and we reserve the right at any time to alter the product design and specifications. No statement should be construed as a warranty or condition, express or implied, as to any product, its fitness for any particular purpose or quality, or any modification or representation of the terms of any purchase agreement. Minor differences between printed and actual colours may exist.

### STAINLESS STEEL



### SKINPLATES



Tel: 0845 230 0303

Email: [sales@expresselevators.com](mailto:sales@expresselevators.com) [www.ExpressElevators.com](http://www.ExpressElevators.com)